

FOR LEASE

Office/Warehouse - Sanford Central Park 4155 St Johns Parkway, Suite 1100

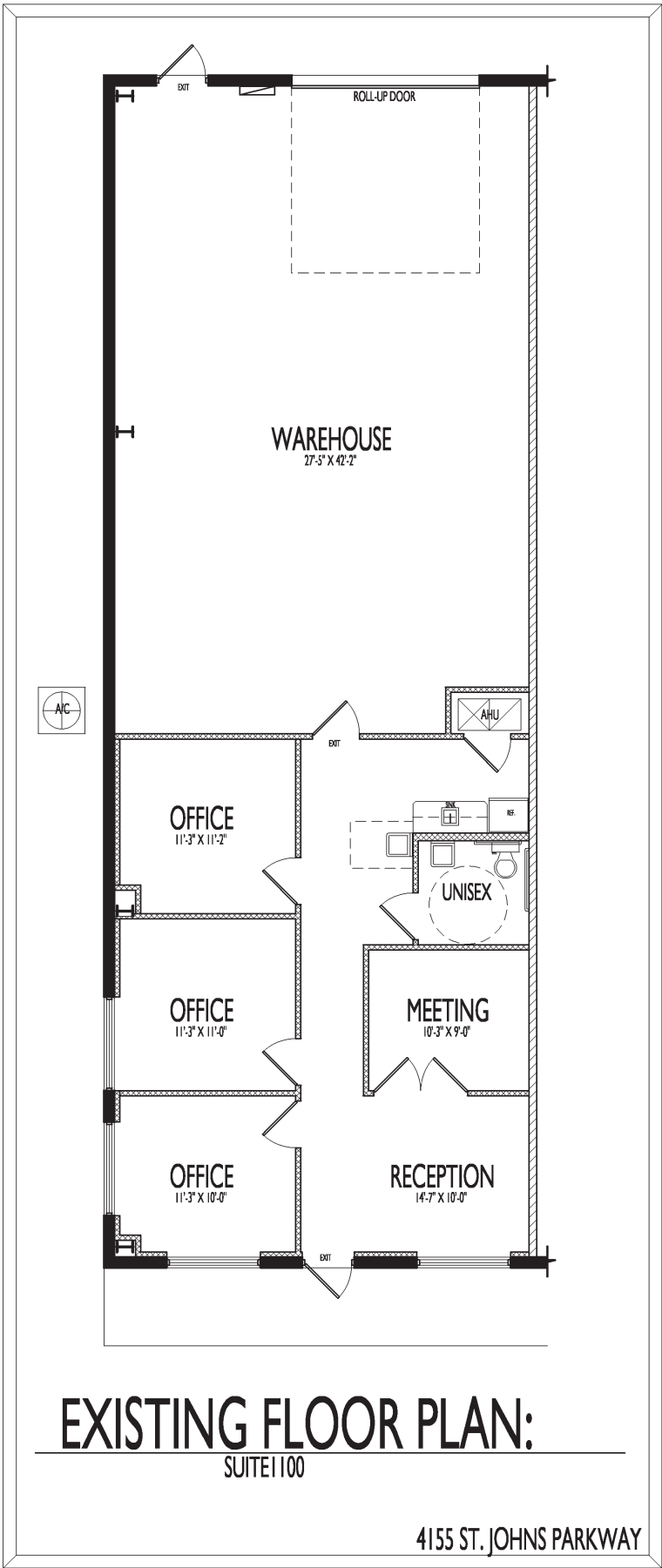


- Approximately 2,200sf
- Kitchen Area with Refrigerator
- Offices, Reception, Conference Room
- 1 Interior Restroom
- Large, Open Non A/C Warehouse
- 1 Grade Level 12'x14' Roll Up Door
- Energy-Efficient Construction
- On-site Management
- **LANDLORD PAYS WATER, TRASH & OPERATING EXPENSES**



Penney Lawrence (407) 353-7019
info@DaveBrewerProperties.com
www.SeeOurNewOffice.com





EXISTING FLOOR PLAN:
SUITE 100

4155 ST. JOHNS PARKWAY